



# Media Release

May 5, 2023

For immediate release

2:30 pm

## Evacuation Alert issued for Village of Salmo and portions of Electoral Area G

Nelson, BC: Based on the weather forecast and consultation with Water Stewardship, the Regional District of Central Kootenay (RDCK) Emergency Operations Centre (EOC) has issued an Evacuation Alert for 892 properties in the Village of Salmo and the communities of Erie and Ymir in Electoral Area G due to risk of flooding. See map and complete list of properties on Evacuation Alert below.

[Evacuation Alert – including all address points](#)

Environment Canada is forecasting heavy rain with the possibility of thunderstorms today and the BC River Forecast Centre has the entire RDCK under flood watch. Erie Creek, the Salmo River and all surrounding tributaries are rising and will approach or may exceed the river banks. Flooding of areas adjacent to affected waterbodies may occur.

**At this time residents or visitors within the area are not required to evacuate**, however the RDCK advises people to remain vigilant and be prepared to leave the area at a moment's notice. The key to emergency preparedness is knowing the risks in your area and having a plan. Take the time **NOW** to assemble your family [Emergency Kit and Grab and Go Bag](#) and ensure preparedness. Your plan should include moving pets and livestock to a safe area, in the event the situation worsens and an Evacuation Order is enforced. Part of your plan should also include where you can go if evacuated.

The RDCK warns everyone to stay away from the edges of watercourses and report any erosion or flooding to the [Provincial Emergency Coordinator Centre](#) at 1.800.663.3456

Updates or changes to the Evacuation Alert will be provided via the [RDCK website](#), [Facebook](#) and [Twitter](#) as more information becomes available. For details about evacuation and emergency preparedness, along with other resources, please visit [www.rdck.ca/eocinfo](http://www.rdck.ca/eocinfo). The RDCK EOC public inquiry line is 250.352.7701.

### What residents can do to be prepared:

- Sandbags and sand are available for residents at KP Park in Salmo at the baseball diamond and Ymir Fire Hall. For other locations throughout the RDCK check out [www.rdck.ca/befloodprepared](http://www.rdck.ca/befloodprepared)

- If you have livestock or large animals, now is the time to consider moving them.
- If you are not physically able to evacuate yourself, contact the EOC public inquiry line at 250.352.7701

For more emergency about evacuations and emergency preparedness, along with other resources:

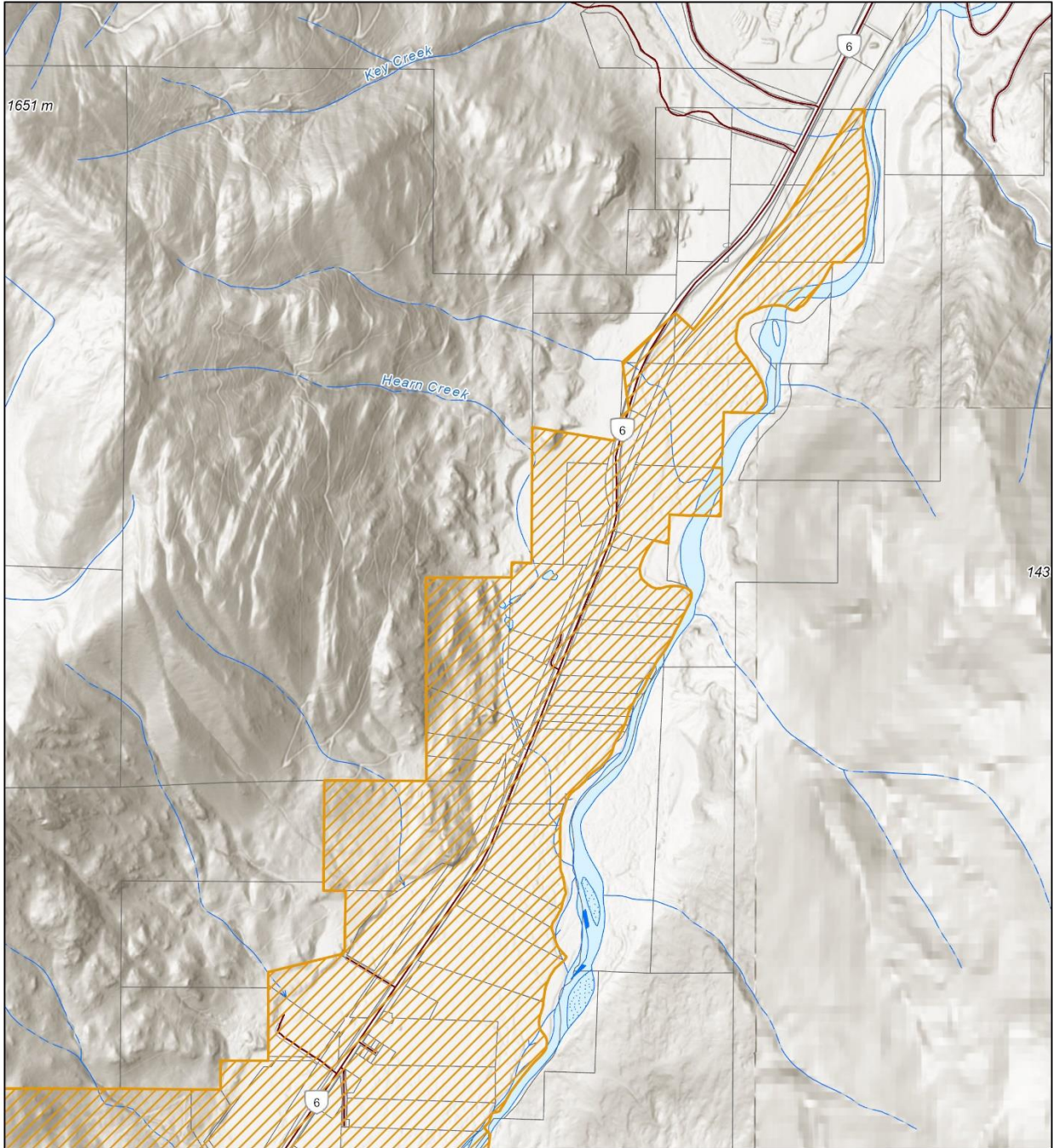
- [Current RDCK Evacuation Alerts, Orders and Rescinds](#) or call 250.352.7701
- Report flooding or any new hazards to the 24-hour toll-free provincial emergency number at 1.800.663.3456.
- [Sign up for RDCK Emergency Notification System to receive notifications](#)
- [RDCK web map](#)
- Follow the [BC River Forecast Centre](#) for flood warning and advisories
- [Public weather alerts for BC from Environment Canada](#)
- [Fortis BC Outage Map](#) or call 1.866.436.7847
- [BC Hydro outage map](#) or call 1.800.224.9376
- [Drive BC](#) for highway closures and road conditions
- [Yellowhead Road and Bridge \(YRB\)](#) 1.888.630.1420
- [Prepared BC](#)

*Incorporated in 1965, the Regional District of Central Kootenay (RDCK) is a local government that serves 60,000 residents in 11 electoral areas and nine member municipalities. The RDCK provides more than 160 services, including community facilities, fire protection and emergency services, grants, planning and land use, regional parks, resource recovery and handling, transit, water services and much more. For more information about the RDCK, visit [www.rdck.ca](http://www.rdck.ca).*

-30-

**For media enquiries:**

EOC Information Officer  
Regional District of Central Kootenay  
Tel: 250.352-7701  
Email: [eocinfo@rdck.bc.ca](mailto:eocinfo@rdck.bc.ca)



**REGIONAL DISTRICT OF  
CENTRAL KOOTENAY  
EMERGENCY  
OPERATIONS CENTRE**

EOC Phone: 250-352-7701 or 1-866-522-7701  
 Current Emergency Information:  
[rdck.ca/EOCinfo](http://rdck.ca/EOCinfo)  
 Register to receive emergency notifications:  
[rdck.ca/notifications](http://rdck.ca/notifications)  
 To report a flood, landslide, spill or other hazards:  
 1-800-663-3456

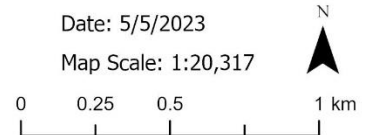
### Salmo & Erie Creek

Page 1 of 3: Salmo North

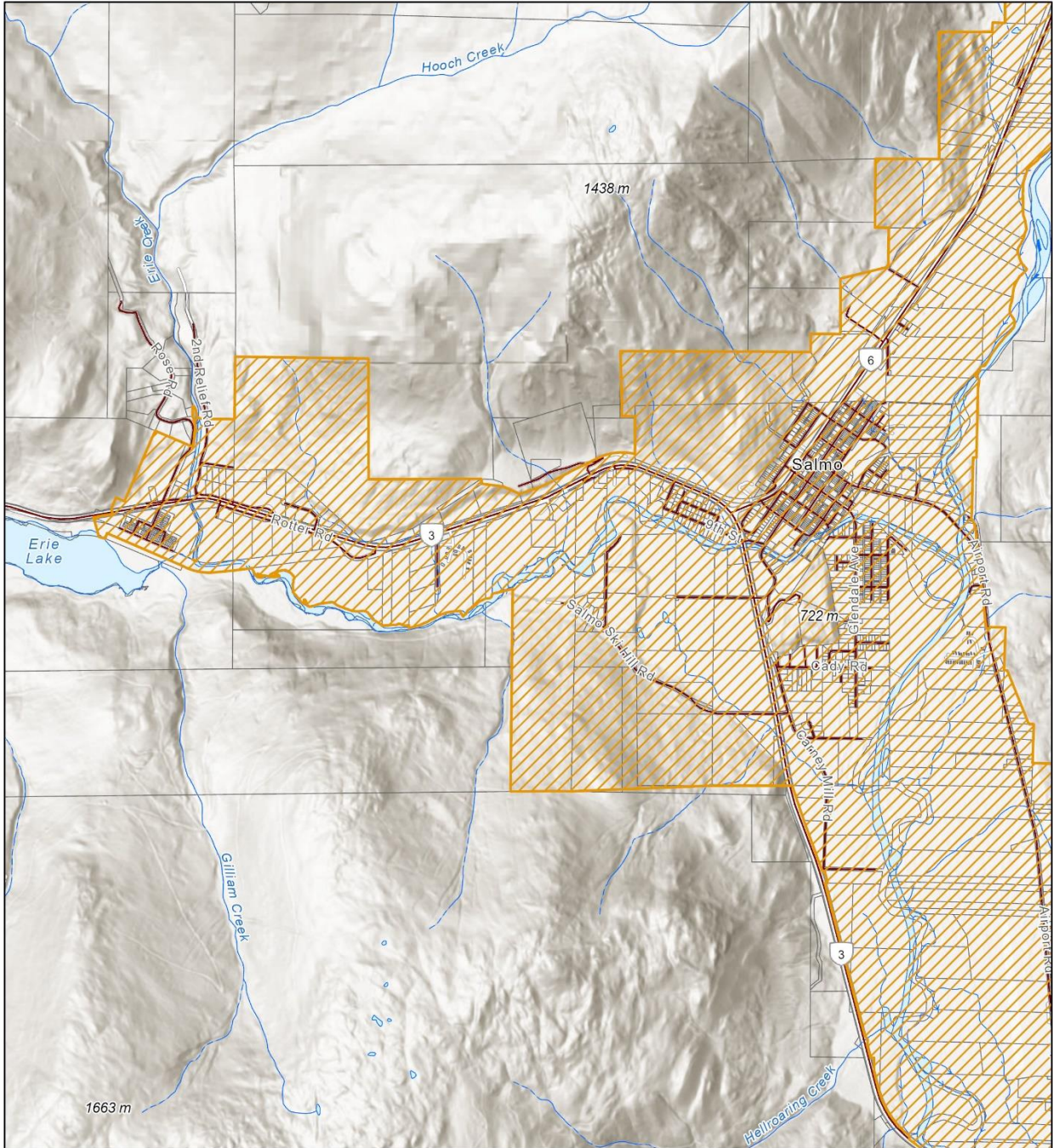
-  Evacuation Alert
-  Streets
-  Legal Parcels
-  Creeks and Waterways

Date: 5/5/2023

Map Scale: 1:20,317



The mapping information shown are approximate representations and should only be used for reference purposes. The Regional District of Central Kootenay is not responsible for any errors or omissions on this map.



**REGIONAL DISTRICT OF  
CENTRAL KOOTENAY  
EMERGENCY  
OPERATIONS CENTRE**

EOC Phone: 250-352-7701 or 1-866-522-7701  
 Current Emergency Information:  
[rdck.ca/EOCinfo](http://rdck.ca/EOCinfo)  
 Register to receive emergency notifications:  
[rdck.ca/notifications](http://rdck.ca/notifications)  
 To report a flood, landslide, spill or other hazards:  
 1-800-663-3456

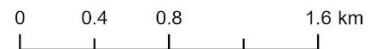
### Salmo & Erie Creek

Page 2 of 3: Salmo Center

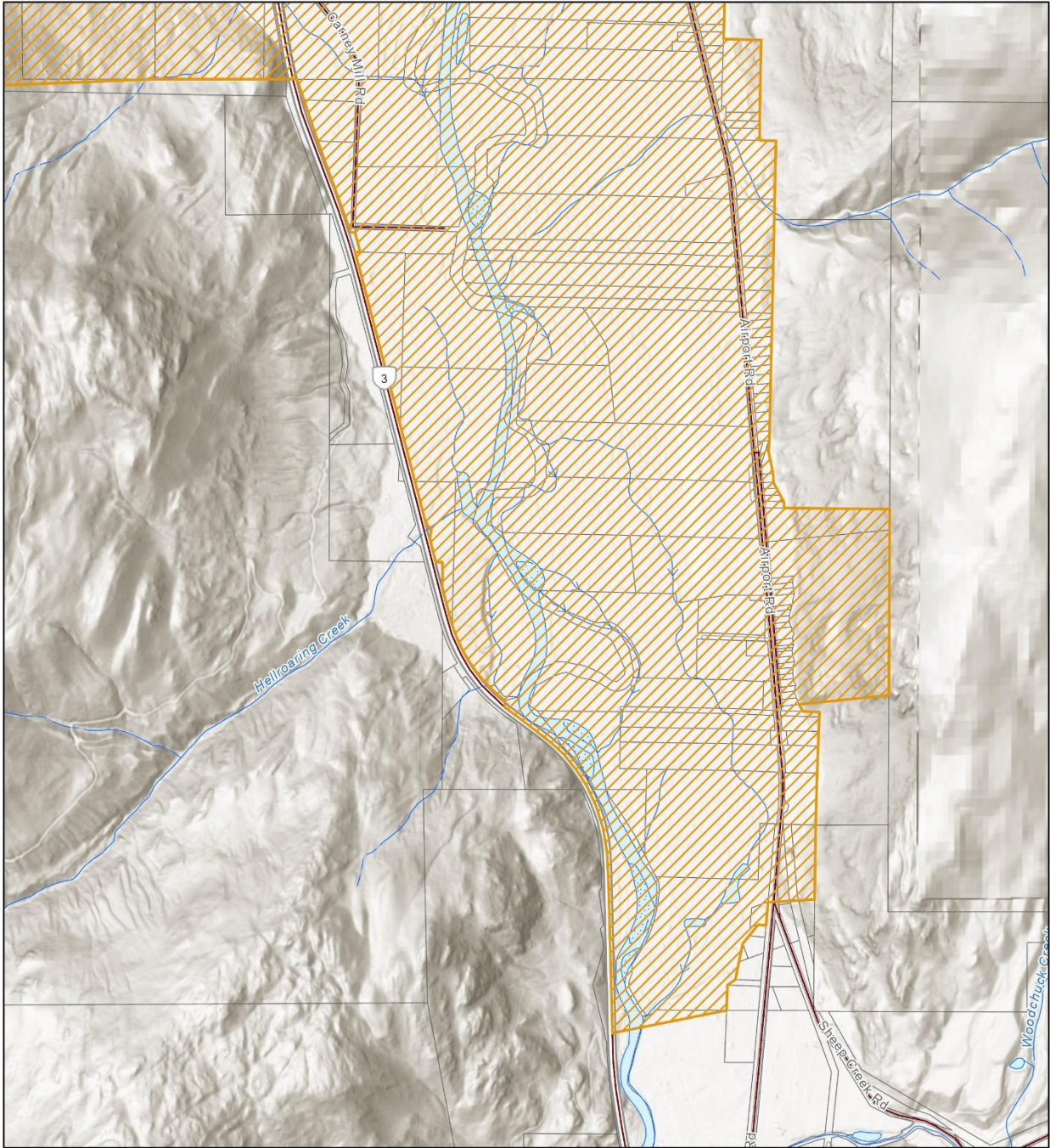
-  Evacuation Alert
-  Streets
-  Legal Parcels
-  Creeks and Waterways

Date: 5/5/2023

Map Scale: 1:32,508



The mapping information shown are approximate representations and should only be used for reference purposes. The Regional District of Central Kootenay is not responsible for any errors or omissions on this map.



**REGIONAL DISTRICT OF  
CENTRAL KOOTENAY  
EMERGENCY  
OPERATIONS CENTRE**

EOC Phone: 250-352-7701 or 1-866-522-7701  
 Current Emergency Information:  
[rdck.ca/EOCinfo](http://rdck.ca/EOCinfo)  
 Register to receive emergency notifications:  
[rdck.ca/notifications](http://rdck.ca/notifications)  
 To report a flood, landslide, spill or other hazards:  
 1-800-663-3456

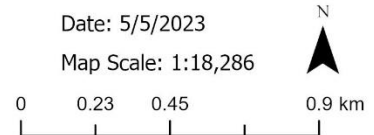
### Salmo & Erie Creek

Page 3 of 3: Salmo South

-  Evacuation Alert
-  Streets
-  Legal Parcels
-  Creeks and Waterways

Date: 5/5/2023

Map Scale: 1:18,286



The mapping information shown are approximate representations and should only be used for reference purposes. The Regional District of Central Kootenay is not responsible for any errors or omissions on this map.